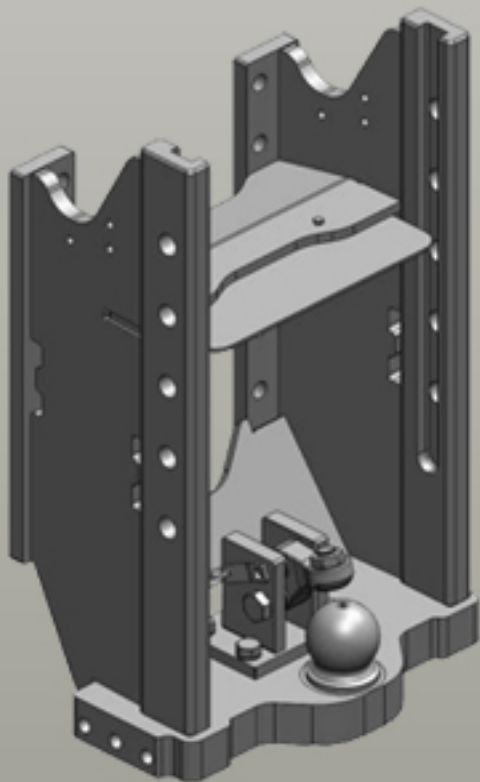
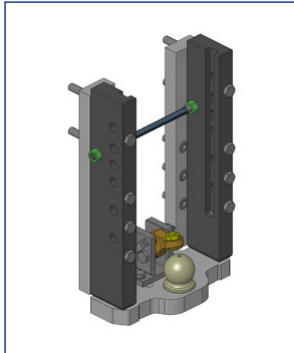




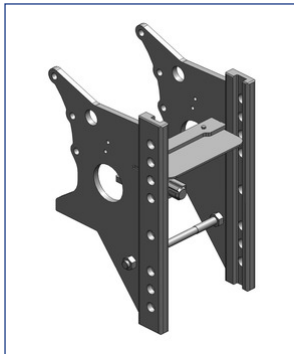
# Ladder Hitches Ford



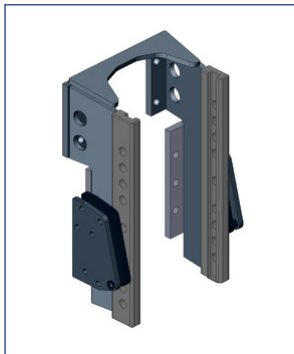
## Ladder Hitches



<b>Art.Nr. 00.158.85.1-A02   Ladder Hitches   Standard</b>	
K80® Ball Coupling System   Assembly Dimension Scharmüller S32 (330/25/32)	
Alternative color	
00.158.85.1-A02 (Black )	
Technical Values*	
Locking: K80® Manual   Max. Permissible D-Value (kN): 91,3   Max. Permissible Vertical Load (kg): 4000	
Adapted for Tractor	
Fiat:	G: 170, 190, 210, 240;
Ford:	8070: 8670, 8770, 8870, 8970;
New Holland:	8070: 8670, 8770, 8870, 8970; G : 170 , 190 , 210 , 240 ;



<b>Art.Nr. 00.276.00.0-A02   Ladder Hitches   Standard</b>	
Assembly Dimension Scharmüller S32 (295/25/32)	
Alternative color	
00.276.00.0-A02 (Black )	
Technical Values*	
Max. Permissible D-Value (kN): 35,4   Max. Permissible Vertical Load (kg): 2000	
Adapted for Tractor	
Ford:	30: 3430, 3930, 4130, 4630, 4830, 5030;



<b>Art.Nr. 00.279.00.0-A02   Ladder Hitches   Standard</b>	
Assembly Dimension Scharmüller S32 (330/25/32)	
Alternative color	
00.279.00.0-A02 (Black )	
Technical Values*	
Max. Permissible D-Value (kN): 82,4   Max. Permissible Vertical Load (kg): 3000	
Adapted for Tractor	
Ford:	8030: 8630, 8730, 8830;
New Holland:	8030: 8630, 8730, 8830;