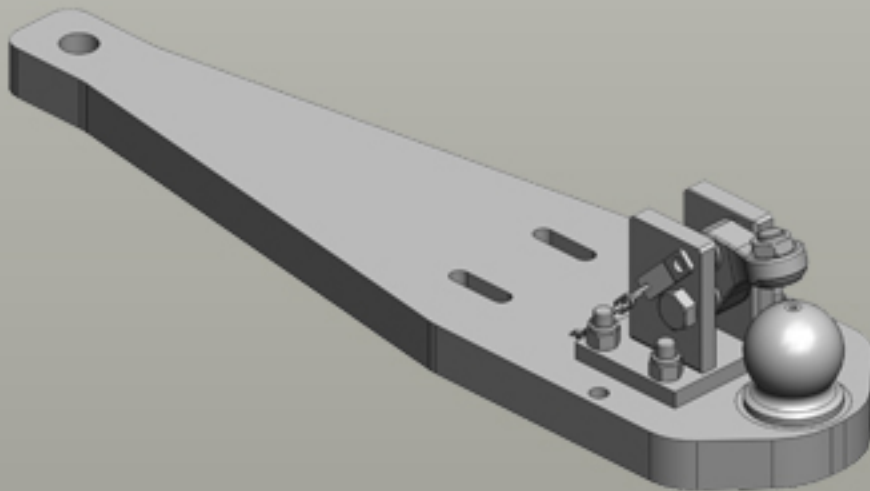
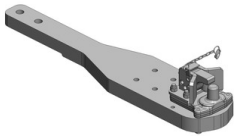

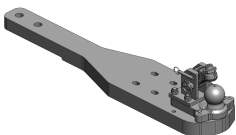

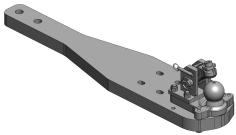

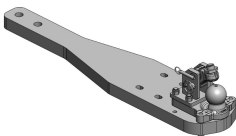





Heavy Duty Drawbars John Deere | 7R (Tier 4 Interim)



Heavy Duty Drawbars

	<p>Art.Nr. 00.963.387.0-A17 Heavy Duty Drawbars Standard Draw-Pin (Pitonfix) </p> <ul style="list-style-type: none"> fits to Scharmüller Ladder-Hitch with Drawbar Frame <p>Alternative color </p> <p>00.963.387.0-A17 (JD-Green)</p> <p>Technical Values*</p> <p>Lenght (mm): 1142 Wide (mm): 240 Assembly-Positions: 2 Thickness (mm): 60 Locking: Draw Pin (Pitonfix) Manual Max. Permissible D-Value (kN): 82,4 Max. Permissible Vertical Load (kg): 4000</p> <p>Adapted for Tractor</p> <p>John Deere: 7R (Tier 3): 7.200, 7.215, 7.230, 7.260, 7.280; 7R (Tier 4 / Stage V): 7R 250, 7R 270, 7R 290, 7R 310, 7R 330, 7R 350; 7R (Tier 4 Interim): 7.210, 7.230, 7.250, 7.270, 7.290, 7.310;</p>
	<p>Art.Nr. 00.964.387.0-A17 Heavy Duty Drawbars Standard K80® Ball Coupling System </p> <ul style="list-style-type: none"> fits to Scharmüller Ladder-Hitch with Drawbar Frame <p>Alternative color </p> <p>00.964.387.0-A17 (JD-Green)</p> <p>Technical Values*</p> <p>Lenght (mm): 1142 Wide (mm): 240 Assembly-Positions: 2 Thickness (mm): 60 Locking: K80® Manual Max. Permissible D-Value (kN): 89,3 Max. Permissible Vertical Load (kg): 4000</p> <p>Adapted for Tractor</p> <p>John Deere: 7R (Tier 3): 7.200, 7.215, 7.230, 7.260, 7.280; 7R (Tier 4 / Stage V): 7R 250, 7R 270, 7R 290, 7R 310, 7R 330, 7R 350; 7R (Tier 4 Interim): 7.210, 7.230, 7.250, 7.270, 7.290, 7.310;</p>
	<p>Art.Nr. 00.964.388.0-A17 Heavy Duty Drawbars Standard K80® Ball Coupling System </p> <ul style="list-style-type: none"> fits to Sauermann Ladder-Hitch (ex factory) with Drawbar Frame Cat. 3 <p>Alternative color </p> <p>00.964.388.0-A17 (JD-Green)</p> <p>Technical Values*</p> <p>Lenght (mm): 1142 Wide (mm): 240 Assembly-Positions: 2 Thickness (mm): 50 Locking: K80® Manual Max. Permissible D-Value (kN): 89,3 Max. Permissible Vertical Load (kg): 4000</p> <p>Adapted for Tractor</p> <p>John Deere: 7R (Tier 3): 7.200, 7.215, 7.230, 7.260, 7.280; 7R (Tier 4 Interim): 7.210, 7.230, 7.250, 7.270, 7.290, 7.310;</p>
	<p>Art.Nr. 00.964.3880.0-A17 Heavy Duty Drawbars Standard K80® Ball Coupling System </p> <ul style="list-style-type: none"> fits to Sauermann Ladder-Hitch (ex factory) with Drawbar Frame Cat. 4 <p>Alternative color </p> <p>00.964.3880.0-A17 (JD-Green)</p> <p>Technical Values*</p> <p>Lenght (mm): 1142 Wide (mm): 240 Assembly-Positions: 2 Thickness (mm): 50 Locking: K80® Manual Max. Permissible D-Value (kN): 89,3 Max. Permissible Vertical Load (kg): 4000</p> <p>Adapted for Tractor</p> <p>John Deere: 7R (Tier 4 / Stage V): 7R 250, 7R 270, 7R 290, 7R 310, 7R 330, 7R 350; 7R (Tier 4 Interim): 7.210, 7.230, 7.250, 7.270, 7.290, 7.310;</p>