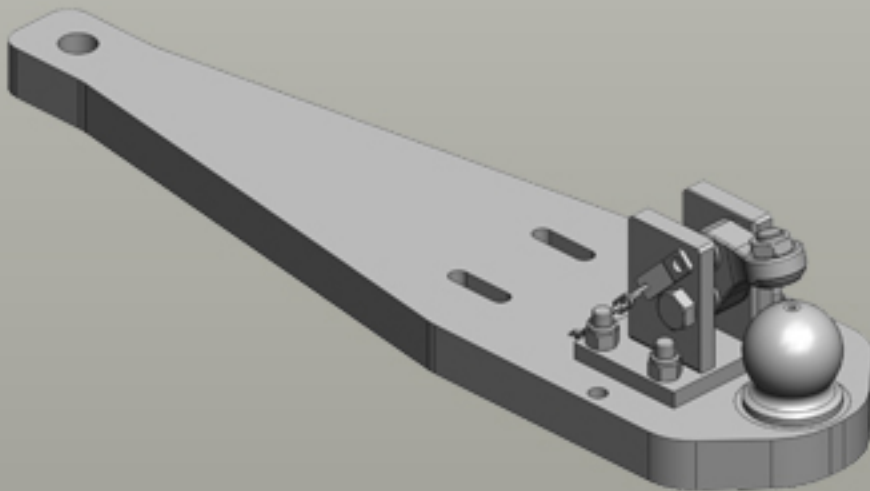
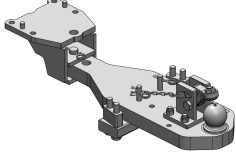

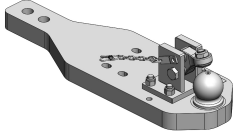

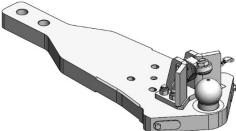

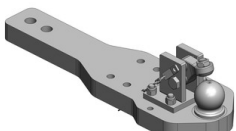





Heavy Duty Drawbars New Holland | T7 LWB (Tier 5)



Heavy Duty Drawbars

	<p>Art.Nr. 00.960.521.0-SET-A02 Heavy Duty Drawbars Standard K80® Ball Coupling System </p> <ul style="list-style-type: none"> fits to Sauermann Ladder-Hitch (ex factory) without Drawbar Frame <p>Alternative color </p> <p>00.960.521.0-SET-A02 (Black)</p> <p>Technical Values*</p> <p>Lenght (mm): 768 Wide (mm): 240 Assembly-Positions: 2 Thickness (mm): 50 Locking: K80® Manual Max. Permissible D-Value (kN): 102,4 Max. Permissible Vertical Load (kg): 4000</p> <p>Adapted for Tractor</p> <p>Case IH: Optum CVX (Tier 4B): 250, 270, 300; Optum CVXDrive (Tier 5): 250, 270, 300; Puma CVX EP LWB (Tier 4B): 185, 200, 220, 240; Puma CVXDrive LWB (Tier 5): 185, 200, 220, 240; Puma EP LWB (Tier 4B): 185, 200, 220, 240; Puma Multicontroller LWB (Tier 5): 185, 200, 220;</p> <p>New Holland: T7 Heavy Duty (Tier 4B): 7.275, 7.290, 7.315; T7 Heavy Duty (Tier 5): 7.275, 7.290, 7.315; T7 LWB (Tier 4B): 7.230, 7.245, 7.260, 7.270; T7 LWB (Tier 5): 7.230, 7.245, 7.260, 7.270; T7 SWB (Tier 5): 7.225;</p> <p>Steyr: Absolut CVT LWB (Tier 5): 6185, 6200, 6220, 6240; CVT EcoTech LWB (Tier 4B): 6185, 6200, 6220, 6240; Terrus CVT (Tier 4B): 6250, 6270, 6300; Terrus CVT (Tier 5): 6250, 6270, 6300;</p>
	<p>Art.Nr. 00.960.522.0-A02 Heavy Duty Drawbars Standard K80® Ball Coupling System </p> <ul style="list-style-type: none"> fits to Scharmüller Ladder-Hitch with Drawbar Frame <p>Alternative color </p> <p>00.960.522.0-A02 (Black)</p> <p>Technical Values*</p> <p>Lenght (mm): 768 Wide (mm): 240 Assembly-Positions: 2 Thickness (mm): 50 Locking: K80® Manual Max. Permissible D-Value (kN): 102,4 Max. Permissible Vertical Load (kg): 3000</p> <p>Adapted for Tractor</p> <p>Case IH: Optum CVX (Tier 4B): 250, 270, 300; Optum CVXDrive (Tier 5): 250, 270, 300; Puma CVX EP LWB (Tier 4A): 170, 185, 200, 215, 230; Puma CVX EP LWB (Tier 4B): 185, 200, 220, 240; Puma CVX LWB: 165, 180, 195, 210, 225; Puma CVXDrive LWB (Tier 5): 185, 200, 220, 240; Puma EP LWB (Tier 4A): 170, 185, 200, 215; Puma EP LWB (Tier 4B): 185, 200, 220; Puma LWB: 165, 180, 195, 210; Puma Multicontroller LWB (Tier 5): 185, 200, 220;</p> <p>New Holland: T7 Heavy Duty (Tier 4B): 7.275, 7.290, 7.315; T7 Heavy Duty (Tier 5): 7.275, 7.290, 7.315; T7 LWB (Tier 4A): 7.220, 7.235, 7.250, 7.260, 7.270; T7 LWB (Tier 4B) : 7.230, 7.245, 7.260, 7.270; T7 LWB (Tier 5): 7.230, 7.245, 7.260, 7.270; T7 SWB (Tier 5): 7.225; T7000 Auto Command: 7030, 7040, 7050, 7060, 7070, 7080; T7000 Power Command: 7030, 7040, 7050, 7060;</p> <p>Steyr: Absolut CVT LWB (Tier 5): 6185, 6200, 6220, 6240; CVT (Tier 3): 6165, 6180, 6200, 6210, 6225; CVT EcoTech LWB (Tier 4A): 6170, 6185, 6205, 6215, 6230; CVT EcoTech LWB (Tier 4B): 6185, 6200, 6220, 6240; Terrus CVT (Tier 4B): 6250, 6270, 6300; Terrus CVT (Tier 5): 6250, 6270, 6300;</p>
	<p>Art.Nr. 00.960.524.0-A03 Heavy Duty Drawbars Standard K80® Ball Coupling System </p> <ul style="list-style-type: none"> fits to Sauermann Ladder-Hitch (ex factory) with Drawbar Frame <p>Alternative color </p> <p>00.960.524.0-A03 (CNH-Darkgrey)</p> <p>Technical Values*</p> <p>Working Length (mm): 161 / 251 Lenght (mm): 872 Wide (mm): 345 Assembly-Positions: 2 Thickness (mm): 50 Locking: K80® Manual Max. Permissible D-Value (kN): 120 Max. Permissible Vertical Load (kg): 4000</p> <p>Adapted for Tractor</p> <p>Case IH: Optum CVXDrive (Tier 5): 250, 270, 300; Puma CVXDrive LWB (Tier 5): 185, 200, 220, 240;</p> <p>New Holland: Puma Multicontroller LWB (Tier 5): 185, 200, 220;</p> <p>Steyr: T7 Heavy Duty (Tier 5): 7.275, 7.290, 7.315; T7 LWB (Tier 5): 7.230, 7.245, 7.260, 7.270; Absolut CVT LWB (Tier 5): 6185, 6200, 6220, 6240; Terrus CVT (Tier 5): 6250, 6270, 6300;</p>
	<p>Art.Nr. 00.960.594.0-A02 Heavy Duty Drawbars Standard K80® Ball Coupling System </p> <ul style="list-style-type: none"> fits to Scharmüller Ladder-Hitch with Drawbar Frame <p>Alternative color </p> <p>00.960.594.0-A02 (Black)</p> <p>Technical Values*</p> <p>Lenght (mm): 760 Wide (mm): 240 Assembly-Positions: 2 Thickness (mm): 50 Locking: K80® Manual Max. Permissible D-Value (kN): 89,3 Max. Permissible Vertical Load (kg): 4000</p> <p>Adapted for Tractor</p> <p>Case IH: Maxxum (Tier 4B), Maxxum CVX (Tier 4B), Maxxum CVX-EP, Maxxum EP, Maxxum Multicontroller (Tier 4B), Puma CVX EP SWB (Tier 4A), Puma CVX EP SWB (Tier 4B), Puma CVXDrive SWB (Tier 5), Puma EP SWB (Tier 4A), Puma EP SWB (Tier 4B), Puma Multicontroller SWB (Tier 5), Puma SWB T6, T6 (Tier 4B), T6000 Range & Power Command, T7 LWB (Tier 5), T7 SWB (Tier 4A), T7 SWB (Tier 4B) , T7 SWB (Tier 5)</p> <p>New Holland: CVT EcoTech SWB (Tier 4A), CVT EcoTech SWB (Tier 4B), Impuls CVT SWB (Tier 5), Profi CVT EcoTech (Tier 4)</p>