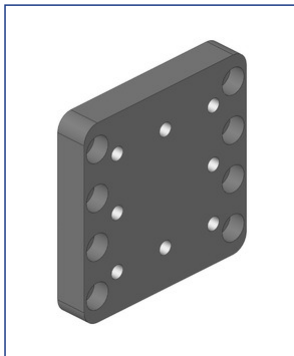




Attachments | Screw-On Plates



Attachments | Screw-On Plates



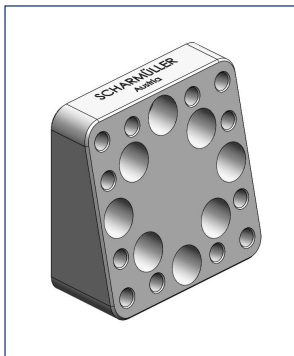
Art.Nr. 00.645.05.0 | Attachments | Screw-On Plates

Technical Values*

Flange Hole Pattern (mm): 145x145 | **Flange Hole Pattern from-to:** 180x205 to 145x145 | **Thread:** M20 | **Hole Pattern Holes:** 16

Adapted for Tractor

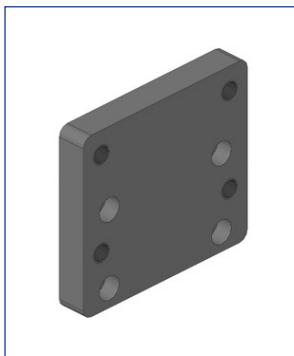
Samson: Samson; **Samson:** Samson;



Art.Nr. 00.645.17.9 | Attachments | Screw-On Plates

Technical Values*

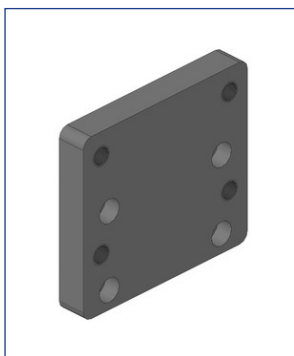
Flange Hole Pattern (mm): 160x160 | **Thread:** M20 | **Hole Pattern Holes:** 20 | **Inclination:** 12°



Art.Nr. 00.645.19.0 | Attachments | Screw-On Plates

Technical Values*

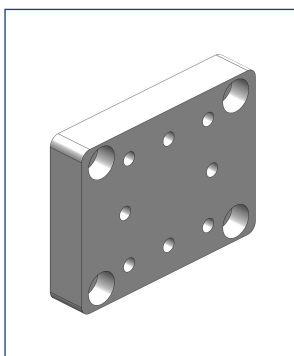
Flange Hole Pattern (mm): 160x100 | **Flange Hole Pattern from-to:** 140x80 to 160x100 | **Thread:** M20 | **Hole Pattern Holes:** 4xM16 / 4xM20



Art.Nr. 00.645.20.0 | Attachments | Screw-On Plates

Technical Values*

Flange Hole Pattern (mm): 140x80 | **Flange Hole Pattern from-to:** 160x100 to 140x80 | **Thread:** M16 | **Hole Pattern Holes:** 4xM16 / 4xM20

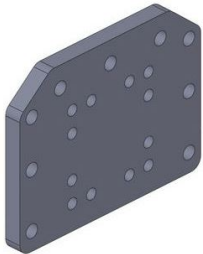


Art.Nr. 00.645.22.0 | Attachments | Screw-On Plates

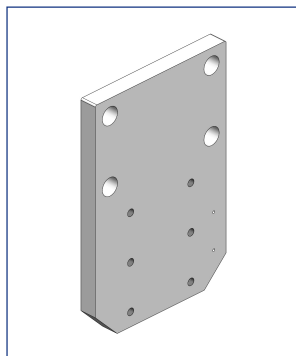
Technical Values*

Flange Hole Pattern (mm): 110x100 | **Flange Hole Pattern from-to:** 170x130 to 110x100 | **Thread:** M16 | **Hole Pattern Holes:** 8xM16 / 4xM20

Attachments | Screw-On Plates

	<p>Art.Nr. 00.645.29.0 Attachments Screw-On Plates</p> <p>Technical Values*</p> <p>Flange Hole Pattern (mm): 110x100 Thread: M16 Hole Pattern Holes: 16 Inclination: 10°</p>
	<p>Art.Nr. 00.645.310.0 Attachments Screw-On Plates</p> <ul style="list-style-type: none"> • Adapter for Lemken <p>Technical Values*</p> <p>Flange Hole Pattern (mm): 160x160 Thread: M20 Hole Pattern Holes: 12</p>
	<p>Art.Nr. 00.645.60.0 Attachments Screw-On Plates</p> <ul style="list-style-type: none"> • ASAE S388.5 <p>Technical Values*</p> <p>Flange Hole Pattern (mm): 160x160 Thread: M20 Hole Pattern Holes: 12</p>
	<p>Art.Nr. 10.312.610.0 Attachments Screw-On Plates</p> <p>Technical Values*</p> <p>Flange Hole Pattern (mm): 83x56 Flange Hole Pattern from-to: 120x55 auf 83x56 Thread: M10 / M14</p>
	<p>Art.Nr. 10.324.239.0 Attachments Screw-On Plates</p> <p>Technical Values*</p> <p>Flange Hole Pattern (mm): 83x56 Flange Hole Pattern from-to: 140x80 auf 83x56 Thread: M10 / M20</p>

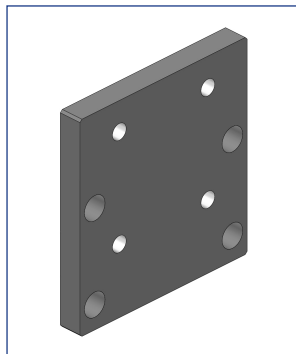
Attachments | Screw-On Plates



Art.Nr. 10.324.324.0-A02 | Attachments | Screw-On Plates

Alternative color 
10.324.324.0-A02 (Black) | 10.324.324.0-A11 (AGCO-Grey)

Technical Values*
Flange Hole Pattern (mm): 83x56 | **Flange Hole Pattern from-to:** 140x80 auf 83x56 | **Thread:** M10 / M20



Art.Nr. 10.324.326.0-A02 | Attachments | Screw-On Plates

Alternative color 
10.324.326.0-A02 (Black)

Technical Values*
Flange Hole Pattern from-to: 140x80 auf 90 | **Thread:** M16 / M20 | **Hole Pattern/Hole Distance (mm):** 90