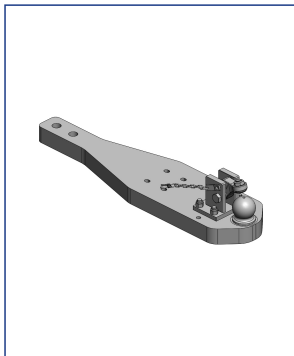




Heavy Duty Drawbars Landini



Heavy Duty Drawbars



Art.Nr. 00.960.250.0-A02 | Heavy Duty Drawbars | Standard
K80® Ball Coupling System |

• fits to Original Ladder Hitch (ex factory) with Drawbar Frame

Alternative color

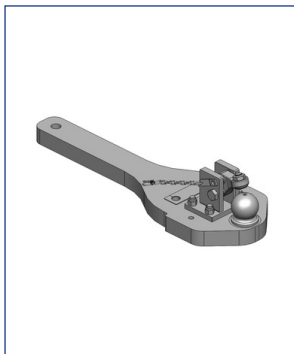
00.960.250.0-A02 (Black)

Technical Values*

Lenght (mm): 1000 | **Wide (mm):** 245 | **Assembly-Positions:** 2 | **Thickness (mm):** 60 | **Locking:** K80® Manual |
Max. Permissible D-Value (kN): 89,3 | **Max. Permissible Vertical Load (kg):** 3000

Adapted for Tractor

Landini: **Serie 7 T4i:** 7-160, 7-175, 7-190, 7-215;



Art.Nr. 00.960.460.3-A11 | Heavy Duty Drawbars | Standard
K80® Ball Coupling System |

• fits to Original Ladder Hitch (ex factory) with Drawbar Frame

Alternative color

00.960.460.3-A11 (AGCO-Grey)

Technical Values*

Lenght (mm): 868 | **Wide (mm):** 290 | **Assembly-Positions:** 1 | **Thickness (mm):** 50 | **Locking:** K80® Manual |
Max. Permissible D-Value (kN): 93,6 | **Max. Permissible Vertical Load (kg):** 3000

Adapted for Tractor

Claas: **Atles:** 915, 925, 926, 935, 936, 946;

Landini: **Powerful:** 230, 260, 280;

Massey Ferguson: **6400 Dyna-4 (Tier 2):** 6497, 6499; **8100:** 8170, 8180; **8200:** 8210, 8220, 8230, 8240, 8250, 8260, 8270,

8280;

McCormick: **ZTX:** 230, 260, 280;