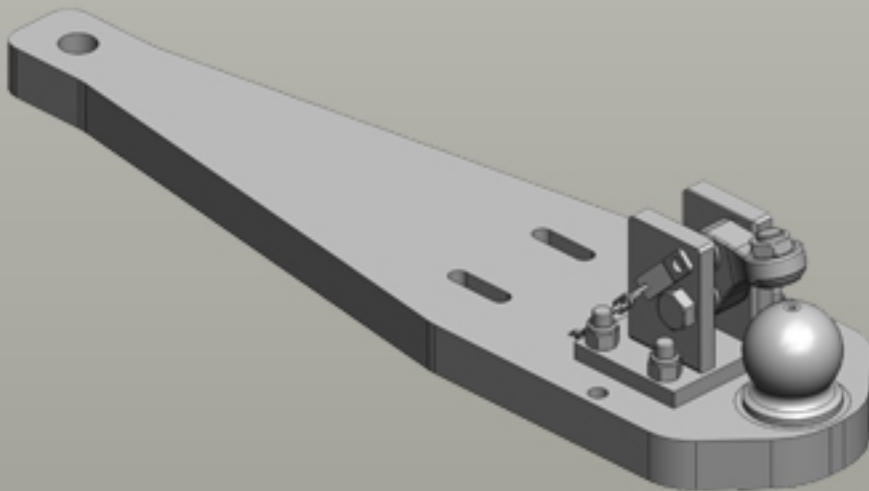




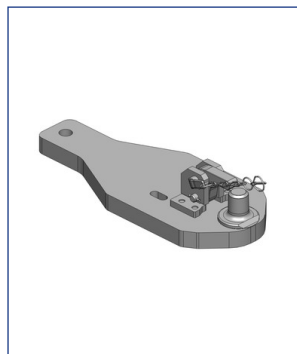
Heavy Duty Drawbars Massey Ferguson | 5400



Heavy Duty Drawbars

	<p>Art.Nr. 00.960.640.0-A11 Heavy Duty Drawbars Standard K80® Ball Coupling System </p> <ul style="list-style-type: none"> Fits up to Chassis-Number: B150019 at MF 5425-5480 / V285018 at MF 6445-6480 / A1906771 at Claas Arion 500/600 fits to Original Ladder Hitch (ex factory) with Drawbar Frame <p>Alternative color </p> <p>00.960.640.0-A11 (AGCO-Grey)</p> <p>Technical Values*</p> <p>Lenght (mm): 703 Wide (mm): 245 Assembly-Positions: 1 Thickness (mm): 40 Locking: K80® Manual Max. Permissible D-Value (kN): 78,5 Max. Permissible Vertical Load (kg): 3000</p> <p>Adapted for Tractor</p> <p>Challenger: MT 500 B AutoPower IV: 525, 535, 545; Claas: Ares 500/600: 546, 547, 556, 557, 566, 567, 577, 616, 617, 656, 657, 696, 697; Ares 800: 816, 826, 836; Arion 500 (A18): 510, 520, 530, 540; Arion 500 (A34/A35): 530, 540, 550; Arion 600 (A19/A20): 610, 620, 630, 640; Arion 600 (A36/A37): 620, 630, 640, 650; Massey Ferguson: 5400: 5425, 5435, 5445, 5455, 5460, 5465, 5470, 5475, 5480; 6200: 6235, 6245, 6255, 6260, 6265, 6270, 6280, 6290; 6400 Dyna-4 (Tier 2): 6485, 6490, 6495; 6400 Dyna-4/6 / Dynashift: 6445, 6455, 6460, 6465, 6470, 6475, 6480;</p>
	<p>Art.Nr. 00.960.647.0-A11 Heavy Duty Drawbars Standard K80® Ball Coupling System </p> <ul style="list-style-type: none"> fits up from Chassis-Number: B150020 at MF 5425-5480 fits to Scharmüller Ladder-Hitch with Drawbar Frame <p>Alternative color </p> <p>00.960.647.0-A11 (AGCO-Grey)</p> <p>Technical Values*</p> <p>Lenght (mm): 646 Wide (mm): 250 Assembly-Positions: 1 Thickness (mm): 40 Locking: K80® Manual Max. Permissible D-Value (kN): 67,6 Max. Permissible Vertical Load (kg): 3000</p> <p>Adapted for Tractor</p> <p>Claas: Arion 400 (A21): 410, 420, 430, 440, 450, 460; Arion 500 (A18): 510, 520, 530, 540; Arion 600 (A19/A20): 610, 620, 630, 640; Massey Ferguson: 5400: 5425, 5435, 5445, 5455, 5460, 5465, 5470, 5475, 5480; 6600 Dyna-4: 6612, 6613, 6615; 7600 Dyna-4: 7614, 7615; 7700 Dyna-4: 7714, 7715;</p>
	<p>Art.Nr. 00.960.649.0-A11 Heavy Duty Drawbars Standard K80® Ball Coupling System </p> <ul style="list-style-type: none"> fits to Scharmüller Ladder-Hitch with Drawbar Frame <p>Alternative color </p> <p>00.960.649.0-A11 (AGCO-Grey)</p> <p>Technical Values*</p> <p>Lenght (mm): 480 Wide (mm): 256 Assembly-Positions: 1 Thickness (mm): 40 Locking: K80® Manual Max. Permissible D-Value (kN): 59,8 Max. Permissible Vertical Load (kg): 3000</p> <p>Adapted for Tractor</p> <p>Claas: Arion 400 (A32/A43): 410, 420, 430, 440, 450, 460; Arion 400 (A72/A73): 410, 420, 430, 440, 450, 460; Massey Ferguson: 4700: 4707, 4708, 4709; 5400: 5410, 5420, 5430, 5440, 5450; 5600 Dyna-4: 5608, 5609, 5610, 5611, 5612, 5613; 5600 Dyna-6: 5608, 5609, 5610, 5611, 5612, 5613; 5700(SL) Dyna-4/6: 5710, 5711, 5712, 5713; Valtra: A4-Serie: 104, 114, 124, 134, 74, 84, 94; G-Serie: 105, 115, 125, 135;</p>
	<p>Art.Nr. 00.961.171.5-A11 Heavy Duty Drawbars Standard Draw-Pin (Pitonfix) </p> <ul style="list-style-type: none"> fits to Scharmüller Ladder-Hitch with Drawbar Frame <p>Alternative color </p> <p>00.961.171.5-A11 (AGCO-Grey)</p> <p>Technical Values*</p> <p>Lenght (mm): 445 Wide (mm): 220 Assembly-Positions: 1 Thickness (mm): 40 Locking: Draw Pin (Pitonfix) Manual Max. Permissible D-Value (kN): 71,9 Max. Permissible Vertical Load (kg): 3000</p> <p>Adapted for Tractor</p> <p>Claas: Arion 400 (A32/A43): 410, 420, 430, 440, 450, 460; Arion 400 (A72/A73): 410, 420, 430, 440, 450, 460; Massey Ferguson: 4700: 4707, 4708, 4709; 5400: 5410, 5420, 5430, 5440, 5450; 5600 Dyna-4: 5608, 5609, 5610, 5611, 5612, 5613; 5600 Dyna-6: 5608, 5609, 5610, 5611, 5612, 5613; 5700(SL) Dyna-4/6: 5710, 5711, 5712, 5713; Valtra: A4-Serie: 104, 114, 124, 134, 74, 84, 94; G-Serie: 105, 115, 125, 135;</p>
	<p>Art.Nr. 00.961.640.0-A11 Heavy Duty Drawbars Standard Draw-Pin (Pitonfix) </p> <ul style="list-style-type: none"> Fits up to Chassis-Number: B150019 at MF 5425-5480 / V285018 at MF 6445-6480 / A1906771 at Claas Arion 500/600 fits to Original Ladder Hitch (ex factory) with Drawbar Frame <p>Alternative color </p> <p>00.961.640.0-A11 (AGCO-Grey)</p> <p>Technical Values*</p> <p>Lenght (mm): 703 Wide (mm): 245 Assembly-Positions: 2 Thickness (mm): 40 Locking: Draw Pin (Pitonfix) Manual Max. Permissible D-Value (kN): 78,5 Max. Permissible Vertical Load (kg): 3000</p> <p>Adapted for Tractor</p> <p>Challenger: MT 500 B AutoPower IV: 525, 535, 545; Claas: Ares 500/600: 546, 547, 556, 557, 566, 567, 577, 616, 617, 656, 657, 696, 697; Ares 800: 816, 826, 836; Arion 500 (A18): 510, 520, 530, 540; Arion 500 (A34/A35): 530, 540, 550; Arion 600 (A19/A20): 610, 620, 630, 640; Arion 600 (A36/A37): 620, 630, 640, 650; Massey Ferguson: 5400: 5425, 5435, 5445, 5455, 5460, 5465, 5470, 5475, 5480; 6200: 6235, 6245, 6255, 6260, 6265, 6270, 6280, 6290; 6400 Dyna-4 (Tier 2): 6485, 6490, 6495;</p>

Heavy Duty Drawbars



Art.Nr. 00.961.645.0-A11 Heavy Duty Drawbars Standard	
Draw-Pin (Pitonfix)	
• fits up from Chassis-Number: B150020 at MF 5425-5480 • fits to Scharmüller Ladder-Hitch with Drawbar Frame	
Alternative color	
00.961.645.0-A11 (AGCO-Grey) 00.961.645.0-A29 (Claas-Grey)	
Technical Values*	
Length (mm): 613 Wide (mm): 250 Assembly-Positions: 1 Thickness (mm): 40 Locking: Draw Pin (Pitonfix) Manual Max. Permissible D-Value (kN): 67,6 Max. Permissible Vertical Load (kg): 3000	
Adapted for Tractor	
Claas:	Arion 400 (A21): 410, 420, 430, 440, 450, 460; Arion 500 (A18): 510, 520, 530, 540; Arion 600 (A19/A20): 610, 620, 630, 640;
Massey Ferguson:	5400: 5425, 5435, 5445, 5455, 5460, 5465, 5470, 5475, 5480; 6600 Dyna-4: 6612, 6613, 6615; 7600 Dyna-4: 7614, 7615; 7700 Dyna-4: 7714, 7715;