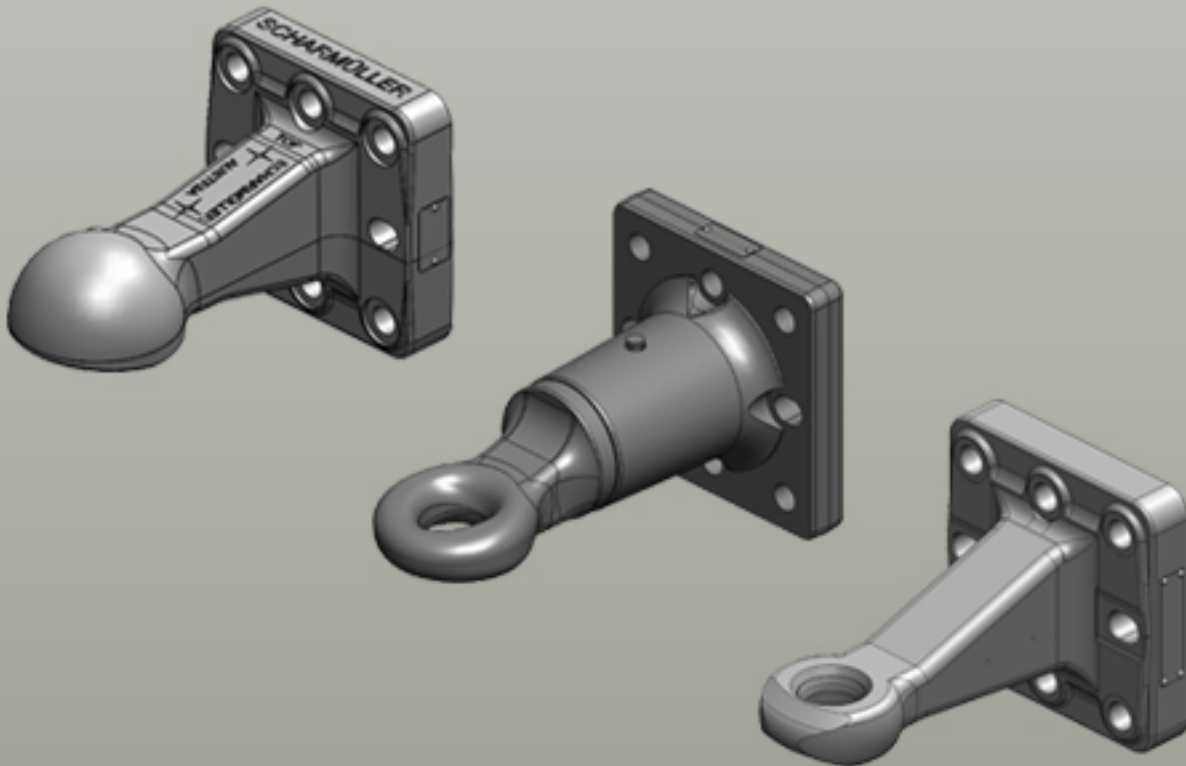

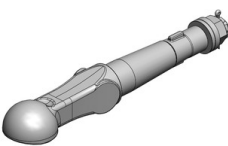
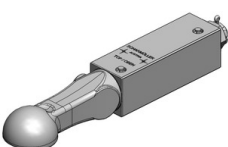




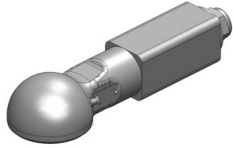

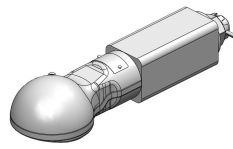

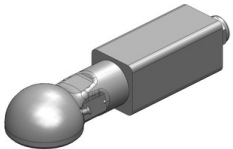

Towing Eyes | Roundshaft K80® Towing Eye Ball Coupling System



Towing Eyes | Roundshaft

	<p>Art.Nr. 00.663.931.0-A02 Towing Eyes Roundshaft K80® Towing Eye Ball Coupling System </p> <p>Alternative color </p> <p>00.663.931.0-A02 (Black)</p> <p>Technical Values*</p> <p>Shaft Diameter Ø (mm): 80 Thread: M45 Working Length (mm): 139 Bearing Housing (mm): 315 Max. Permissible D-Value (kN): 102,4 Max. Permissible Vertical Load (kg): 4000 Shaft Height x Width: 102x102 Approval Status: VO (EU) 2015/208</p>
	<p>Art.Nr. 00.663.932.0-A02 Towing Eyes Roundshaft K80® Towing Eye Ball Coupling System </p> <p>Alternative color </p> <p>00.663.932.0-A02 (Black) 00.663.932.0-A20 (Pöttinger-Red)</p> <p>Technical Values*</p> <p>Shaft Diameter Ø (mm): 80 Thread: M45 Working Length (mm): 139 Bearing Housing (mm): 315 Max. Permissible D-Value (kN): 102,4 Max. Permissible Vertical Load (kg): 4000 Approval Status: VO (EU) 2015/208</p>
	<p>Art.Nr. 00.663.932.7-A02 Towing Eyes Roundshaft K80® Towing Eye Ball Coupling System </p> <p>Alternative color </p> <p>00.663.932.7-A02 (Black)</p> <p>Technical Values*</p> <p>Shaft Diameter Ø (mm): 80 Thread: M45 Working Length (mm): 180 Bearing Housing (mm): 315 Max. Permissible D-Value (kN): 110,4 Max. Permissible Vertical Load (kg): 4000 Shaft Height x Width: 162x100 Approval Status: ABG General Type Approval</p>
	<p>Art.Nr. 00.663.933.0-A02 Towing Eyes Roundshaft K80® Towing Eye Ball Coupling System </p> <p>Alternative color </p> <p>00.663.933.0-A02 (Black)</p> <p>Technical Values*</p> <p>Shaft Diameter Ø (mm): 80 Thread: M45 Working Length (mm): 239 Bearing Housing (mm): 315 Max. Permissible D-Value (kN): 102,4 Max. Permissible Vertical Load (kg): 2000 Approval Status: VO (EU) 2015/208</p>
	<p>Art.Nr. 00.663.934.0-A02 Towing Eyes Roundshaft K80® Towing Eye Ball Coupling System </p> <p>Alternative color </p> <p>00.663.934.0-A02 (Black)</p> <p>Technical Values*</p> <p>Shaft Diameter Ø (mm): 80 Thread: M45 Working Length (mm): 239 Bearing Housing (mm): 315 Max. Permissible D-Value (kN): 102,4 Max. Permissible Vertical Load (kg): 2000 Shaft Height x Width: 102x102 Approval Status: VO (EU) 2015/208</p>

Towing Eyes | Roundshaft

	<p>Art.Nr. 00.666.90.6-A01 Towing Eyes Roundshaft K80® Towing Eye Ball Coupling System </p> <p>Alternative color </p> <p>00.666.90.6-A01 (Black-Primer)</p> <p>Technical Values*</p> <p>Shaft Diameter Ø (mm): 60 Thread: M30 Working Length (mm): 150 Bearing Housing (mm): 160 Max. Permissible Vertical Load (kg): 1000 Shaft Height x Width: 75x75 Max. Permissible Dc-Value (kN): 62,8 Max. Permissible V-Value (kN): 25 Approval Status: ECE-55R</p>
	<p>Art.Nr. 00.666.92.0-A01 Towing Eyes Roundshaft K80® Towing Eye Ball Coupling System </p> <p>Alternative color </p> <p>00.666.92.0-A01 (Black-Primer)</p> <p>Technical Values*</p> <p>Shaft Diameter Ø (mm): 60 Thread: M30x2 Working Length (mm): 150 Bearing Housing (mm): 160 Max. Permissible D-Value (kN): 62,8 Max. Permissible Vertical Load (kg): 2000 Shaft Height x Width: 75x75 Approval Status: VO (EU) 2015/208</p>
	<p>Art.Nr. 00.666.92.6-A01 Towing Eyes Roundshaft K80® Towing Eye Ball Coupling System </p> <p>Alternative color </p> <p>00.666.92.6-A01 (Black-Primer)</p> <p>Technical Values*</p> <p>Shaft Diameter Ø (mm): 60 Thread: M30 Working Length (mm): 150 Bearing Housing (mm): 200 Max. Permissible Vertical Load (kg): 1000 Shaft Height x Width: 90x90 Max. Permissible Dc-Value (kN): 62,8 Max. Permissible V-Value (kN): 25 Approval Status: ECE-55R</p>