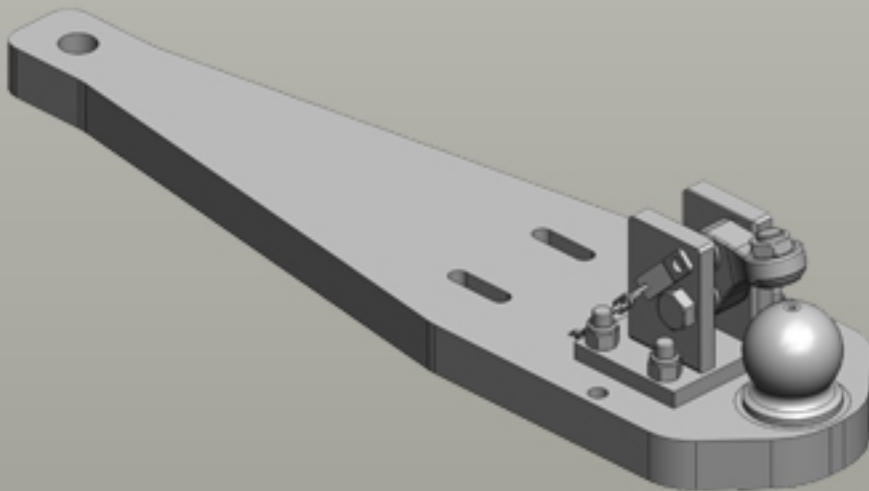
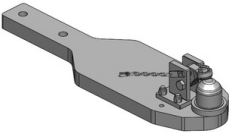

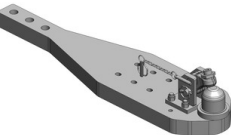

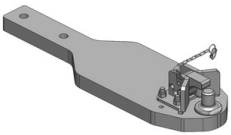

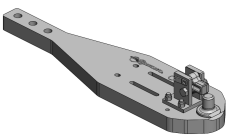




Heavy Duty Drawbars Same



Heavy Duty Drawbars

	<p>Art.Nr. 00.960.291.1-A34 Heavy Duty Drawbars Standard K80® Ball Coupling System </p> <p>Alternative color </p> <p>00.960.291.1-A34 (Kubota-Grey) 00.960.291.1-A02 (Black)</p> <p>Technical Values*</p> <p>Lenght (mm): 957 Wide (mm): 284 Assembly-Positions: 2 Thickness (mm): 50 Locking: K80® Manual Max. Permissible D-Value (kN): 89,3 Max. Permissible Vertical Load (kg): 3000</p> <p>Adapted for Tractor</p> <p>Deutz-Fahr: Agrottron Serie 7 TTV: 7210; Kubota: M7001: 7.131, 7.151, 7.171; M7002: 7.132, 7.152, 7.172; M7003: 7.133, 7.153, 7.173; Lamborghini: R6 T4i VRT: 210; Same: X Continuo: 210;</p>
	<p>Art.Nr. 00.960.331.0-A02 Heavy Duty Drawbars Standard K80® Ball Coupling System </p> <ul style="list-style-type: none"> fits to Scharmüller & Sauermann Ladder Hitch with Drawbar Frame <p>Alternative color </p> <p>00.960.331.0-A02 (Black)</p> <p>Technical Values*</p> <p>Lenght (mm): 1110 Wide (mm): 280 Assembly-Positions: 3 Thickness (mm): 60 Locking: K80® Manual Max. Permissible D-Value (kN): 92 Max. Permissible Vertical Load (kg): 3000</p> <p>Adapted for Tractor</p> <p>Deutz-Fahr: Agrottron Serie 7 TTV: 7230, 7250; Lamborghini: R6 T4i VRT: 230, 250; Same: X Continuo: 230, 250;</p>
	<p>Art.Nr. 00.961.291.1-A02 Heavy Duty Drawbars Standard Draw-Pin (Pitonfix) </p> <p>Alternative color </p> <p>00.961.291.1-A02 (Black) 00.961.291.1-A34 (Kubota-Grey)</p> <p>Technical Values*</p> <p>Lenght (mm): 957 Wide (mm): 284 Assembly-Positions: 2 Thickness (mm): 50 Locking: Draw Pin (Pitonfix) Manual Max. Permissible D-Value (kN): 89,3 Max. Permissible Vertical Load (kg): 3000</p> <p>Adapted for Tractor</p> <p>Deutz-Fahr: Agrottron Serie 7 TTV: 7210; Kubota: M7001: 7.131, 7.151, 7.171; M7002: 7.132, 7.152, 7.172; M7003: 7.133, 7.153, 7.173; Lamborghini: R6 T4i VRT: 210; Same: X Continuo: 210;</p>
	<p>Art.Nr. 00.961.331.0 Heavy Duty Drawbars Standard Draw-Pin (Pitonfix) </p> <ul style="list-style-type: none"> fits to Scharmüller & Sauermann Ladder Hitch with Drawbar Frame <p>Technical Values*</p> <p>Lenght (mm): 1110 Wide (mm): 280 Assembly-Positions: 3 Thickness (mm): 60 Locking: Draw Pin (Pitonfix) Manual Max. Permissible D-Value (kN): 92 Max. Permissible Vertical Load (kg): 3000</p> <p>Adapted for Tractor</p> <p>Deutz-Fahr: Agrottron Serie 7 TTV: 7230, 7250; Lamborghini: R6 T4i VRT: 230, 250; Same: X Continuo: 230, 250;</p>