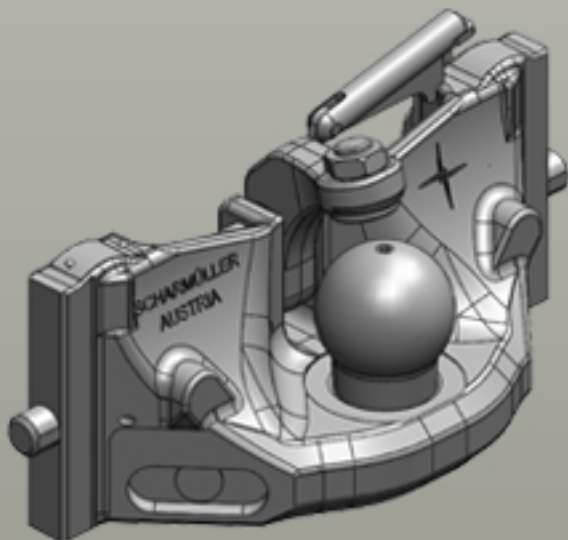


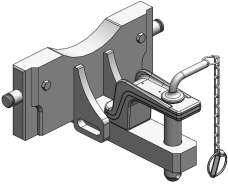

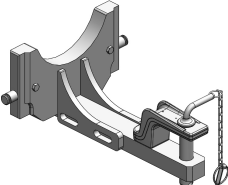

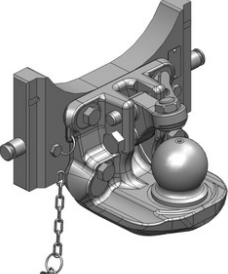

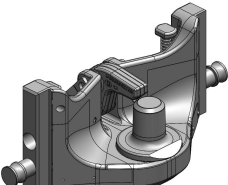

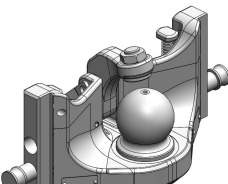



# Inserts for Ladder Hitches

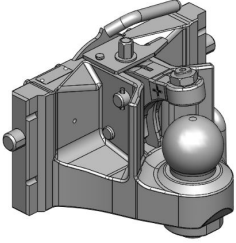

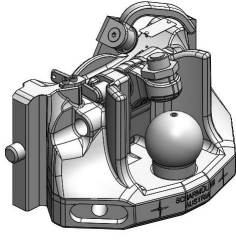

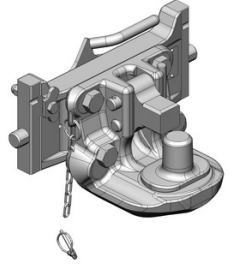

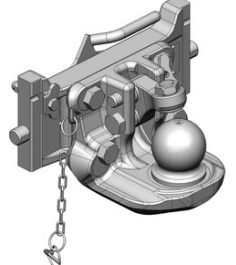

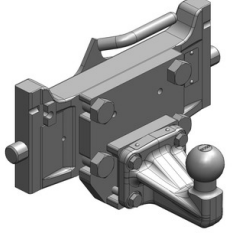

Assembly Dimension Scharmüller S32 (330/25/32)



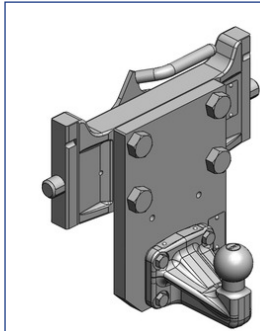
## Inserts for Ladder Hitches

	<p><b>Art.Nr. 00.833.00.0-A02   Inserts for Ladder Hitches   Coupling Inserts</b>  Drawbar Cat. 2 (31,5mm Coupler Bolt)   Assembly Dimension Scharmüller S32 (330/25/32)</p> <p><b>Alternative color</b> </p> <p>00.833.00.0-A02 (Black )</p> <p><b>Technical Values*</b></p> <p><b>Working Length (mm):</b> 230   <b>Adapter Plate Height (mm):</b> 145   <b>Max. Permissible D-Value (kN):</b> 32,7   <b>Max. Permissible Vertical Load (kg):</b> 1600   • Pluggable with Bolt</p>
	<p><b>Art.Nr. 00.833.01.0-A02   Inserts for Ladder Hitches   Coupling Inserts</b>  Drawbar Cat. 2 (31,5mm Coupler Bolt)   Assembly Dimension Scharmüller S32 (330/25/32)</p> <p><b>Alternative color</b> </p> <p>00.833.01.0-A02 (Black )</p> <p><b>Technical Values*</b></p> <p><b>Working Length (mm):</b> 400   <b>Adapter Plate Height (mm):</b> 145   <b>Max. Permissible D-Value (kN):</b> 32,7   <b>Max. Permissible Vertical Load (kg):</b> 650   • Pluggable with Bolt</p>
	<p><b>Art.Nr. 03.6330.44-A02   Inserts for Ladder Hitches   Coupling Inserts</b>  K80® Ball Coupling System   Assembly Dimension Scharmüller S32 (330/25/32)</p> <p><b>Alternative color</b> </p> <p>03.6330.44-A02 (Black )</p> <p><b>Technical Values*</b></p> <p><b>Thread:</b> M20   <b>Working Length (mm):</b> 155   <b>Adapter Plate Height (mm):</b> 180   <b>Locking:</b> K80® Manual   <b>Max. Permissible D-Value (kN):</b> 83,9   <b>Max. Permissible Vertical Load (kg):</b> 2000   • for Bottom Connection with Wide Angle P.T.O   • Pluggable with Bolt</p>
	<p><b>Art.Nr. 05.6330.16-A02   Inserts for Ladder Hitches   Coupling Inserts</b>  Draw-Pin (Pitonfix)   Assembly Dimension Scharmüller S32 (330/25/32)</p> <p><b>Alternative color</b> </p> <p>05.6330.16-A02 (Black )   05.6330.16-A16 (Kubota-Grey)   05.6330.16-A17 (JD-Green)</p> <p><b>Technical Values*</b></p> <p><b>Working Length (mm):</b> 67   <b>Adapter Plate Height (mm):</b> 160   <b>Locking:</b> Draw Pin (Pitonfix) Manual   <b>Max. Permissible D-Value (kN):</b> 89,3   <b>Max. Permissible Vertical Load (kg):</b> 3000   • Pluggable with Bolt</p>
	<p><b>Art.Nr. 05.6330.51-A02   Inserts for Ladder Hitches   Coupling Inserts</b>  K80® Ball Coupling System   Assembly Dimension Scharmüller S32 (330/25/32)</p> <p>for ladder rail 118x50 (JD) 2x Art.Nr.: 10.403.189.0 required</p> <p><b>Alternative color</b> </p> <p>05.6330.51-A02 (Black )   05.6330.51-A11 (AGCO-Grey)   05.6330.51-A16 (Kubota-Grey)   05.6330.51-A17 (JD-Green)</p> <p><b>Technical Values*</b></p> <p><b>Working Length (mm):</b> 57   <b>Adapter Plate Height (mm):</b> 160   <b>Locking:</b> K80® Manual   <b>Max. Permissible D-Value (kN):</b> 89,3   <b>Max. Permissible Vertical Load (kg):</b> 4000   • Pluggable with Bolt</p>

## Inserts for Ladder Hitches

	<p><b>Art.Nr. 05.6330.61-A02   Inserts for Ladder Hitches   Coupling Inserts</b>  K80® Ball Coupling System   Assembly Dimension Scharmüller S32 (330/25/32)</p> <p><b>Alternative color</b> </p> <p>05.6330.61-A02 (Black )   05.6330.61-A17 (JD-Green)</p> <p><b>Technical Values*</b></p> <p><b>Working Length (mm):</b> 153   <b>Adapter Plate Height (mm):</b> 173   <b>Locking:</b> K80® Automatic   <b>Max. Permissible D-Value (kN):</b> 89,3   <b>Max. Permissible Vertical Load (kg):</b> 3000    • Remote Control Preparation for other Producers   • Height Adjustable with Grabhandle</p>
	<p><b>Art.Nr. 05.6330.70-A02   Inserts for Ladder Hitches   Coupling Inserts</b>  K80® Ball Coupling System   Assembly Dimension Scharmüller S32 (330/25/32)</p> <p><b>Alternative color</b> </p> <p>05.6330.70-A02 (Black )   05.6330.70-A17 (JD-Green)</p> <p><b>Technical Values*</b></p> <p><b>Working Length (mm):</b> 135   <b>Adapter Plate Height (mm):</b> 170   <b>Locking:</b> K80® Manual   <b>Max. Permissible D-Value (kN):</b> 120,2   <b>Max. Permissible Vertical Load (kg):</b> 4000   • Height Adjustable with Grabhandle</p>
	<p><b>Art.Nr. 07.6330.32-A02   Inserts for Ladder Hitches   Coupling Inserts</b>  Draw-Pin (Pitonfix)   Assembly Dimension Scharmüller S32 (330/25/32)</p> <p><b>Alternative color</b> </p> <p>07.6330.32-A02 (Black )   07.6330.32-A16 (Kubota-Grey)   07.6330.32-A17 (JD-Green)   07.6330.32-A23 (Kiotti-Grey)</p> <p><b>Technical Values*</b></p> <p><b>Thread:</b> M20   <b>Working Length (mm):</b> 155   <b>Adapter Plate Height (mm):</b> 150   <b>Locking:</b> Draw Pin (Pitonfix) Manual   <b>Max. Permissible D-Value (kN):</b> 89,3   <b>Max. Permissible Vertical Load (kg):</b> 3000   • Height Adjustable with Grabhandle</p>
	<p><b>Art.Nr. 07.6330.42-A02   Inserts for Ladder Hitches   Coupling Inserts</b>  K80® Ball Coupling System   Assembly Dimension Scharmüller S32 (330/25/32)</p> <p><b>Alternative color</b> </p> <p>07.6330.42-A02 (Black )   07.6330.42-A16 (Kubota-Grey)   07.6330.42-A17 (JD-Green)</p> <p><b>Technical Values*</b></p> <p><b>Thread:</b> M20   <b>Working Length (mm):</b> 155   <b>Adapter Plate Height (mm):</b> 150   <b>Locking:</b> K80® Manual   <b>Max. Permissible D-Value (kN):</b> 89,3   <b>Max. Permissible Vertical Load (kg):</b> 3000   • Height Adjustable with Grabhandle</p>
	<p><b>Art.Nr. 07.7330.04-A02   Inserts for Ladder Hitches   Coupling Inserts</b>  ISO 50 (Car)   Assembly Dimension Scharmüller S32 (330/25/32)</p> <p><b>Alternative color</b> </p> <p>07.7330.04-A02 (Black )   07.7330.04-A17 (JD-Green)   07.7330.04-A23 (Kiotti-Grey)</p> <p><b>Technical Values*</b></p> <p><b>Thread:</b> M20   <b>Working Length (mm):</b> 167   <b>Adapter Plate Height (mm):</b> 150   <b>Max. Permissible D-Value (kN):</b> 31   <b>Max. Permissible Vertical Load (kg):</b> 250   • Height Adjustable with Grabhandle</p>

## Inserts for Ladder Hitches



### Art.Nr. 07.7330.05-A02 | Inserts for Ladder Hitches | Coupling Inserts

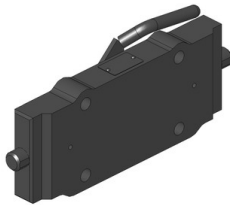
ISO 50 (Car) | Assembly Dimension Scharmüller S32 (330/25/32)

Alternative color

07.7330.05-A02 (Black)

Technical Values\*

**Thread:** M20 | **Working Length (mm):** 147 | **Adapter Plate Height (mm):** 150 | **Max. Permissible D-Value (kN):** 31 | **Max. Permissible Vertical Load (kg):** 250 | • Coupling-Point 10cm lower | • Height Adjustable with Grabhandle



### Art.Nr. 03.7330.60-A02 | Inserts for Ladder Hitches | Adapter Plates

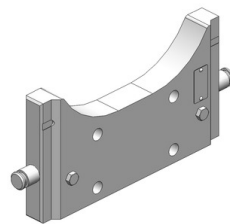
Assembly Dimension Scharmüller S32 (330/25/32)

Alternative color

03.7330.60-A02 (Black)

Technical Values\*

**Flange Hole Pattern (mm):** 160x100 | **Thread:** M20 | **Hole Pattern Holes:** 4 | **Adapter Plate Height (mm):** 120 | **Max. Permissible D-Value (kN):** 89,3 | **Max. Permissible Vertical Load (kg):** 2000 | • Height Adjustable with Grabhandle



### Art.Nr. 03.7330.65-A02 | Inserts for Ladder Hitches | Adapter Plates

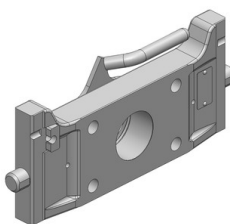
Assembly Dimension Scharmüller S32 (330/25/32)

Alternative color

03.7330.65-A02 (Black)

Technical Values\*

**Flange Hole Pattern (mm):** 140x80 | **Thread:** M20 | **Hole Pattern Holes:** 4 | **Adapter Plate Height (mm):** 180 | **Max. Permissible D-Value (kN):** 83,9 | **Max. Permissible Vertical Load (kg):** 2000 | • for Bottom Connection with Wide Angle P.T.O | • Pluggable with Bolt



### Art.Nr. 07.7330.52-A02 | Inserts for Ladder Hitches | Adapter Plates

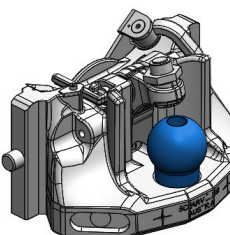
Assembly Dimension Scharmüller S32 (330/25/32)

Alternative color

07.7330.52-A02 (Black) | 07.7330.52-A11 (AGCO-Grey) | 07.7330.52-A16 (Kubota-Grey) | 07.7330.52-A17 (JD-Green) | 07.7330.52-A23 (Kioti-Grey)

Technical Values\*

**Flange Hole Pattern (mm):** 140x80 | **Thread:** M20 | **Hole Pattern Holes:** 4 | **Adapter Plate Height (mm):** 150 | **Max. Permissible D-Value (kN):** 89,3 | **Max. Permissible Vertical Load (kg):** 3000 | • Height Adjustable with Grabhandle



### Art.Nr. 85.6330.70-A02 | Inserts for Ladder Hitches | Lenkkugel K80® EAMS

K80® Ball Coupling System | Assembly Dimension Scharmüller S32 (330/25/32)

Alternative color

85.6330.70-A02 (Black)

Technical Values\*

**Working Length (mm):** 135 | **Locking:** K80® Manual | **Max. Permissible D-Value (kN):** 120,2 | **Max. Permissible Vertical Load (kg):** 4000 | • Height Adjustable with Grabhandle | **Measuring Range:** Angle Measurement