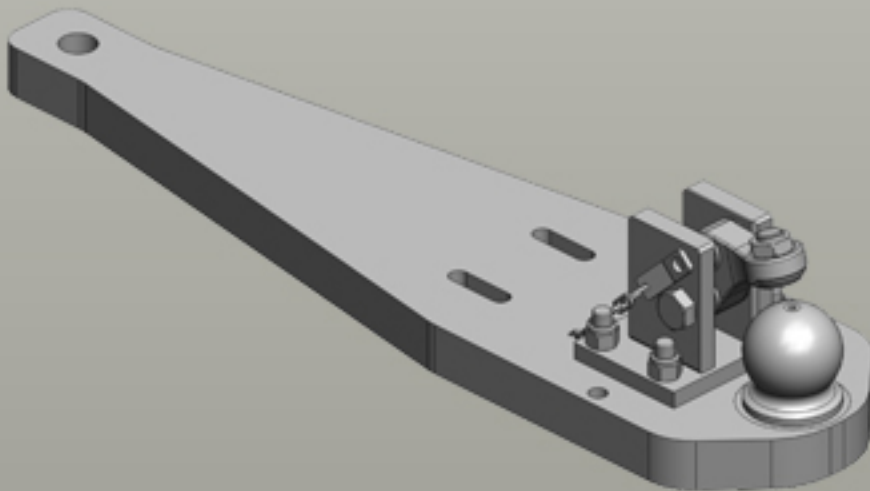
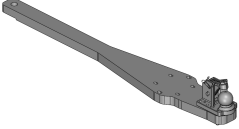

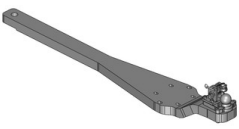

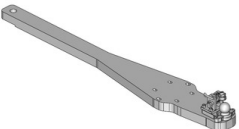





Heavy Duty Drawbars Case IH | Quadtrac EP (Tier 4B)



Heavy Duty Drawbars

	<p>Art.Nr. 00.962.331.0-A02 Heavy Duty Drawbars Standard K110 Ball Coupling System </p> <ul style="list-style-type: none"> fits to Original Drawbar Frame (ex factory) <p>Alternative color </p> <p>00.962.331.0-A02 (Black)</p> <p>Technical Values*</p> <p>Lenght (mm): 2309 Wide (mm): 350 Assembly-Positions: 1 Thickness (mm): 70 Locking: K110 Manual Max. Permissible D-Value (kN): 125 Max. Permissible Vertical Load (kg): 4000</p> <p>Adapted for Tractor</p> <p>Case IH: Quadtrac EP (Tier 4B): 470, 500, 540, 580, 620; Steiger EP (Tier 4B): 370, 420, 470, 500, 540, 580, 620;</p>
	<p>Art.Nr. 00.964.330.0-A02 Heavy Duty Drawbars Standard K80® Ball Coupling System </p> <ul style="list-style-type: none"> fits to "Large Frame" Original Drawbar Frame (ex factory) <p>Alternative color </p> <p>00.964.330.0-A02 (Black)</p> <p>Technical Values*</p> <p>Lenght (mm): 2290 Wide (mm): 350 Assembly-Positions: 1 Thickness (mm): 70 Locking: K80® Manual Max. Permissible D-Value (kN): 91,3 Max. Permissible Vertical Load (kg): 4000 Offset: to the Top</p> <p>Adapted for Tractor</p> <p>Case IH: Quadtrac EP (Tier 4B): 470, 500, 540, 580, 620; Steiger EP (Tier 4B): 370, 420, 470, 500, 540, 580, 620;</p>
	<p>Art.Nr. 00.964.331.0-A02 Heavy Duty Drawbars Standard K80® Ball Coupling System </p> <ul style="list-style-type: none"> fits to "Large Frame" Original Drawbar Frame (ex factory) <p>Alternative color </p> <p>00.964.331.0-A02 (Black)</p> <p>Technical Values*</p> <p>Lenght (mm): 2290 Wide (mm): 350 Assembly-Positions: 1 Thickness (mm): 70 Locking: K80® Manual Max. Permissible D-Value (kN): 91,3 Max. Permissible Vertical Load (kg): 4000</p> <p>Adapted for Tractor</p> <p>Case IH: Quadtrac EP (Tier 4B): 470, 500, 540, 580, 620; Steiger EP (Tier 4B): 370, 420, 470, 500, 540, 580, 620;</p>