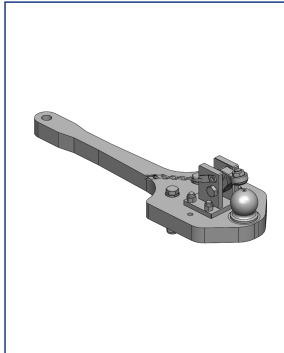




Heavy Duty Drawbars Massey Ferguson | 7600 Dyna-VT



Heavy Duty Drawbars



Art.Nr. 00.960.3121.0-A11 | Heavy Duty Drawbars | Standard K80® Ball Coupling System |

- fits to Fendt-Tractors with Year of Construction up to 2008 |
- fits with Fendt drawbarframe H716.501.120.102 for Farmer-Vario 400 |
- fits with Fendt drawbarframe H716.500.120.100 for Favorit-Vario 700, 800

Alternative color

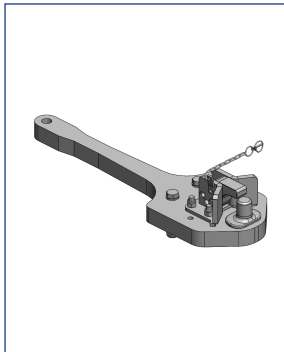
00.960.3121.0-A11 (AGCO-Grey)

Technical Values*

Lenght (mm): 885 | Wide (mm): 284 | Assembly-Positions: 1 | Thickness (mm): 50 | Locking: K80® Manual |
Max. Permissible D-Value (kN): 82,4 | Max. Permissible Vertical Load (kg): 3000

Adapted for Tractor

Challenger: MT 500 B TechStar: 525, 535, 545, 555, 565, 575, 585, 595;
Fendt: Farmer-Vario 400: 409, 410, 411, 412; Favorit-Vario 700: 711, 712, 714, 716, 718; Vario 400: 411, 412, 413, 414, 415; Vario 700/800: 711, 712, 714, 716, 718, 815, 816, 817, 818, 820;
Massey Ferguson: 6600 Dyna -VT: 6614, 6615, 6616; 6700 S Dyna-VT: 6713, 6714, 6715, 6716, 6718; 7465-7499: 7465, 7475, 7480, 7485, 7490, 7495, 7497, 7499; 7600 Dyna-VT: 7615, 7616, 7618, 7619, 7620, 7622, 7624;



Art.Nr. 00.961.312.1-A11 | Heavy Duty Drawbars | Standard Draw-Pin (Pitonfix) |

- fits to Fendt-Tractors with Year of Construction up to 2008 |
- fits with Fendt drawbarframe H716.501.120.102 for Farmer-Vario 400 |
- fits with Fendt drawbarframe H716.500.120.100 for Favorit-Vario 700, 800

Alternative color

00.961.312.1-A11 (AGCO-Grey)

Technical Values*

Lenght (mm): 885 | Wide (mm): 284 | Assembly-Positions: 1 | Thickness (mm): 50 | Locking: Draw Pin (Pitonfix) Manual |
Max. Permissible D-Value (kN): 82,4 | Max. Permissible Vertical Load (kg): 3000

Adapted for Tractor

Challenger: MT 500 B TechStar: 525, 535, 545, 555, 565, 575, 585, 595;
Fendt: Farmer-Vario 400: 409, 410, 411, 412; Favorit-Vario 700: 711, 712, 714, 716, 718; Vario 400: 411, 412, 413, 414, 415; Vario 700/800: 711, 712, 714, 716, 718, 815, 816, 817, 818, 820;
Massey Ferguson: 7465-7499: 7465, 7475, 7480, 7485, 7490, 7495, 7497, 7499; 7600 Dyna-VT: 7615, 7616, 7618, 7619, 7620, 7622, 7624;